



# SCADA FEST

ORLANDO | 2026

Proudly Presented by  
**VTScada**  
Trihedral  
A Delta Group Company



## New Features Great and Small

Chris Little

Media Relations



# New Features Great and Small

## Ripped from the VTScada Change Log!

**VTScada**  
by Trihedral

Download VTScada

About VTScada Pricing Try It Resources Integrators Contact News Events

**Technical Support**

- Contact Technical Support
- Support Forum
- SCADA Software Training
- Support Pricing
- Documentation and Online Help

### Download VTScada

Here you'll find links to download the latest version, legacy versions, and the free versions of VTScada. Learn how to upgrade VTScada or about our software licensing.

**Download the latest released version of VTScada\*:**  
\*A software key is required. If you need a key, please contact us

Downloads End User License Prohibited End-Use Terms

I have read and agree to Downloads End User License and Prohibited End-Use Terms.

Download VTScada 12.2.19

Change Log

**Download a legacy version of VTScada:**  
Download a legacy version of VTScada from our FTP site: **Please accept the terms to view FTP client information.** Use this url in an FTP client software such as WinSCP where the connection is anonymous so no username or password are required. Note: To Run VTScada, A software license key is required. If you need a key, please contact us.

**EULA:**  
View the VTScada License Agreement (EULA)

**Important Notices:**

- Customers running 12.2.10 or 12.2.11 that use OPC UA Client drivers need to upgrade to

### VTScada version 12.2.19 - Released March 11, 2026

#### New Features

ID	Description
F2074	VTScada now supports an On-Demand Poll for the DNP3 driver through a built-in DNP3 Poll Button widget, enabling users to manually trigger polling as needed.
F2073	The Setup Recommendations dialog now appears only on first install or when recommendations have been updated.
F2061	A new "STAT" address suffix has been added that when present will adjust the date used to write the data read from this address.
F2053	The Flow Computer tag now supports the Sensia NUFLO Scanner.

#### Incidents Cleared

ID	Description
I25108	The OPC UA Client driver incorrectly configured Boolean nodes to report on timestamp-only changes, resulting in unnecessary load.
I25106	The VTScada OPC DA server was reporting Digital IO tag values as Booleans (VT_BOOL) instead of integers (VT_I2), which was an unexpected change in behavior.
I25104	Multi-monitor VTScada Internet Client sessions could revert to a single display after logout and not restore the extra displays until restart.
I25094	GetTSFromISOTS and IsDecimalValue caused high processing load when called in steady state.
I25073	Asynchronous reads could have returned different results than regular polls for some drivers.
I24985	The OPC UA Client Driver triggered soft failovers too readily with unknown node addresses.
I24939	Certain ROC Flow Computer events were displayed as "Unknown" since special event formats were not handled correctly.
I24928	The checkbox to mark a Context property or Type parameter as translatable was easy to misinterpret.
I24298	VTScada had a small chance of crashing when opening the Idea Studio.

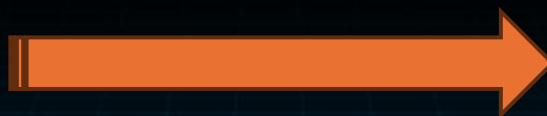
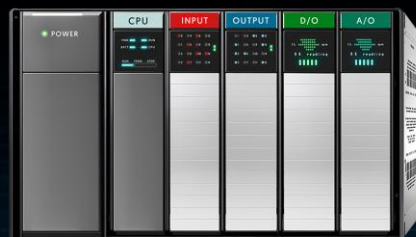
### VTScada version 12.2.17 - Released February 24, 2026



# "STAT" address suffix adjusts date used to write data from an address

## Problem it Solves

- Many PLCs calculate totals over a period (e.g., daily flow).
- They report the value after the period ends - often a bit before or after midnight.
- VTScada normally timestamps data with the moment it arrives.
- Totals to appear on the wrong day (misaligned trends, reports, and charts).



**Daily Flow**  
Sent once a day at  
midnight

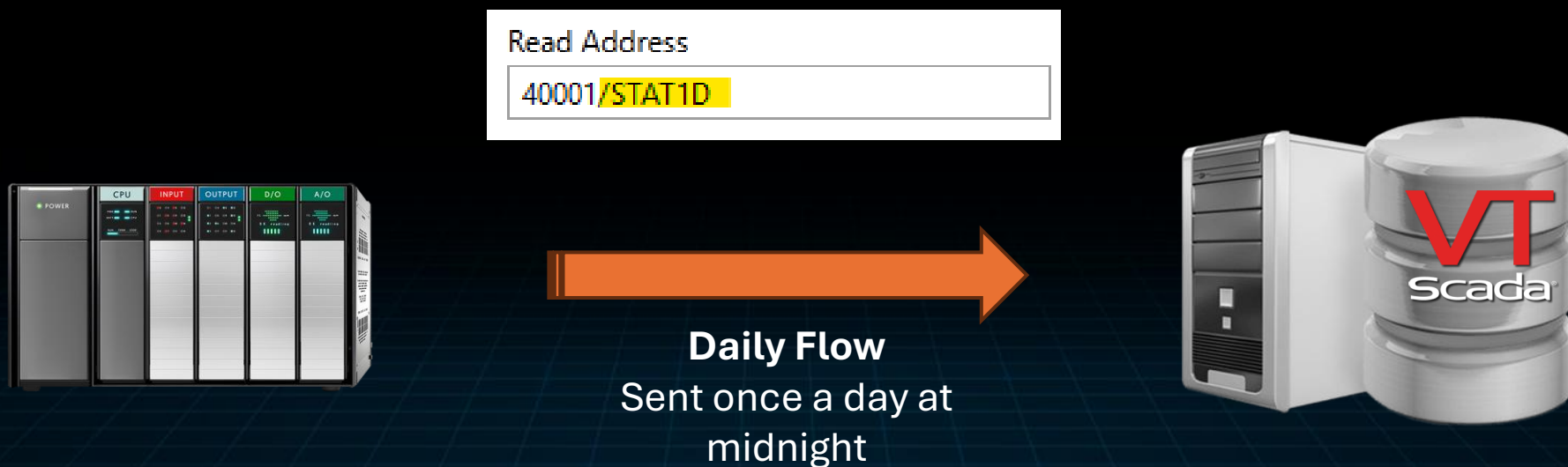




"STAT" address suffix adjusts date used to write data read from this address.

## What STAT Does

- On arrival, it snaps the timestamp to the nearest calendar boundary (e.g., midnight).
- Offsets it back by the amount you specify (e.g., 1 day, 10 minutes, 30 seconds).
- Stores the result in the historian with the correct real-world time.



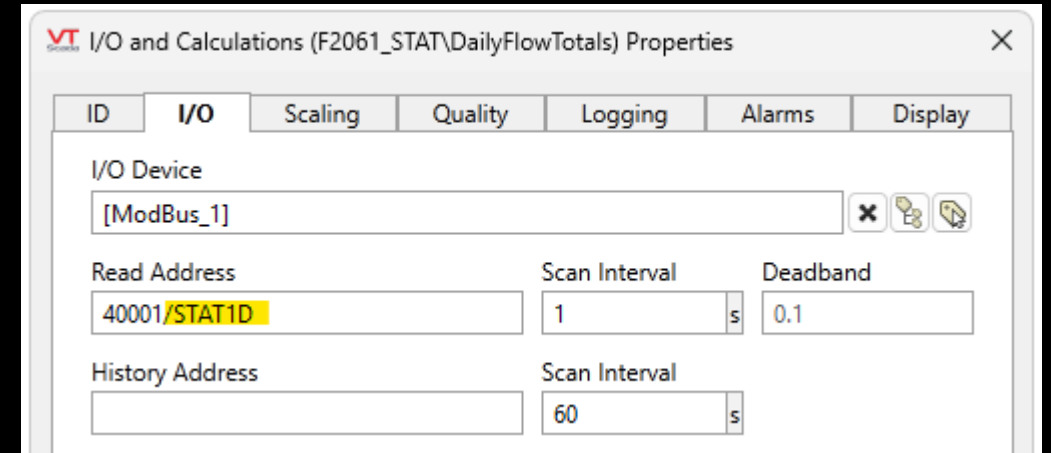


"STAT" address suffix adjusts date used to write data read from this address.

## Daily Total (STAT:1D)

- PLC sends "Daily Total = 386 at 00:00 May 6"
- STAT snaps to midnight
- Offsets -1 day

VTScada records it as 00:00 May 5.



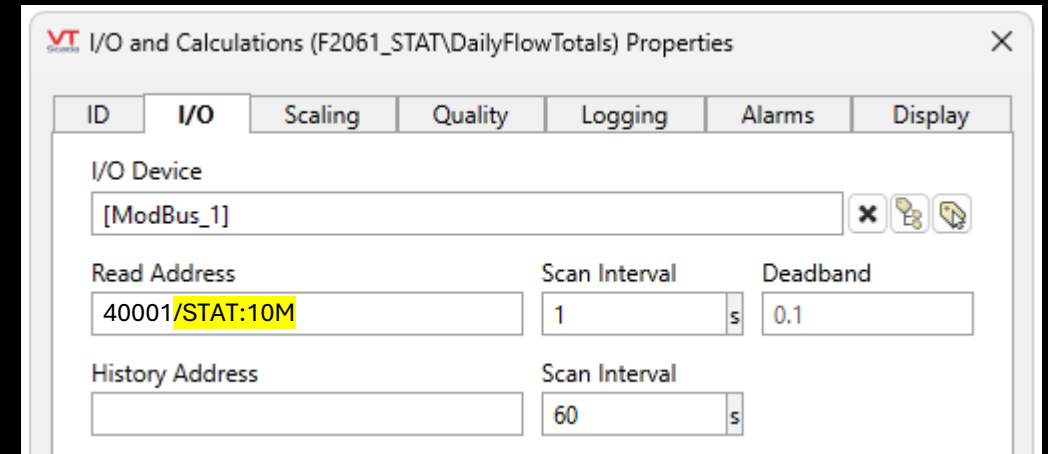


"STAT" address suffix adjusts date used to write data read from this address.

## Delayed Reporting (STAT:10M)

- PLC reports values 10 minutes late
- Use STAT:10M to shift timestamps 10 minutes earlier

Charts and reports line up correctly.





"STAT" address suffix adjusts date used to write data read from this address.

## Parameters:

- **Unit – Required** - "D" for days, "M" for minutes, "H" for hours.
- **Multiplier – Required** - Multiplier of the unit. Must be greater than 0 and a whole number. Decimals appear to work but produce unexpected behavior.
- **Time Zone – Optional** - Full text string of a time zone from the options returned by [TimeZoneList](#) function. Defaults to the server's time zone.
- **InDST – Optional** - Boolean. Indicates if daylight savings time (DST) was in use in the source time zone at the moment defined by the timestamp.



"STAT" address suffix adjusts date used to write data read from this address.

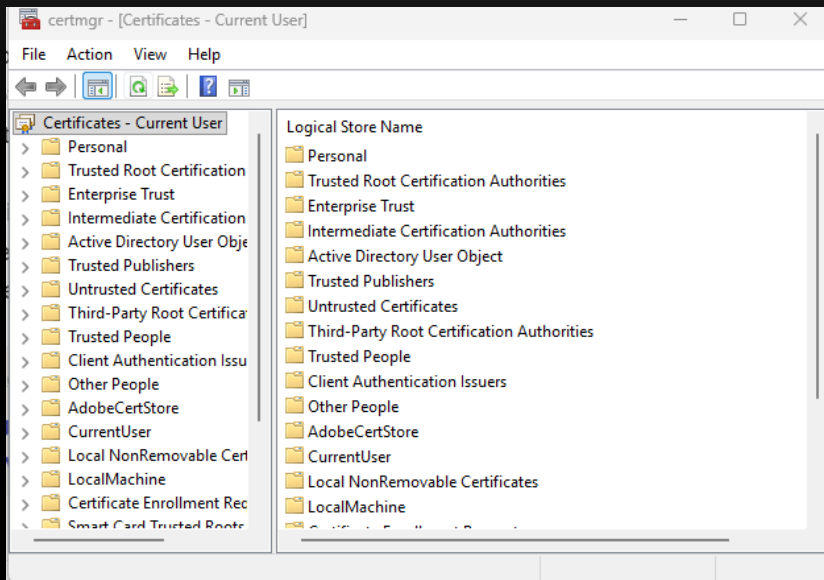
## Deadband (STAT tolerance)

- A separate STAT deadband/tolerance determines how close to a boundary VTScada can snap a value.
- Default is 25% of the unit (e.g., 6 hours for a day).
- Prevents small offsets (e.g., PLC sending at 23:58) from causing incorrect day assignment.

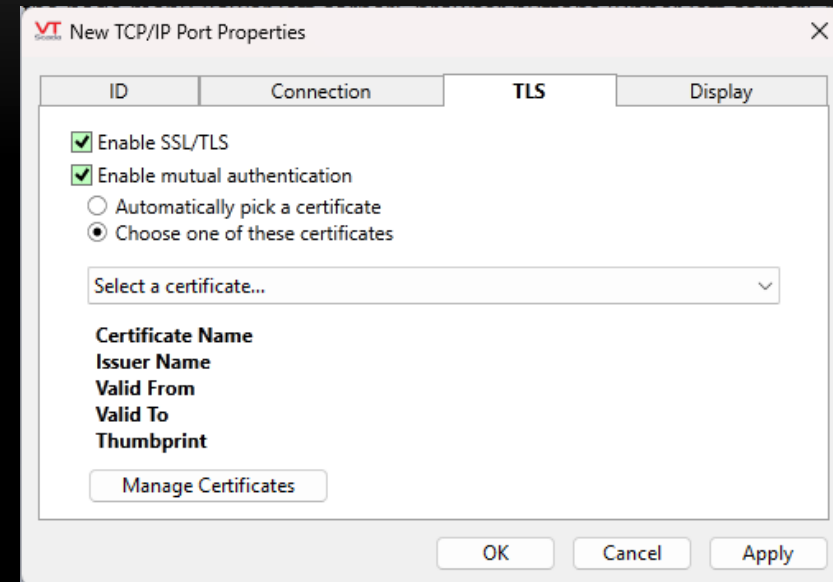


# Certificate Management UI

Previously required the Windows' Certificate Management UI. Jumping between VTScada and the OS was cumbersome and error-prone.



Built-in certificate management tool makes it easier to create, select, and manage TLS certificates within VTScada, without leaving the application.





# Certificate Management UI

## New tool provides...

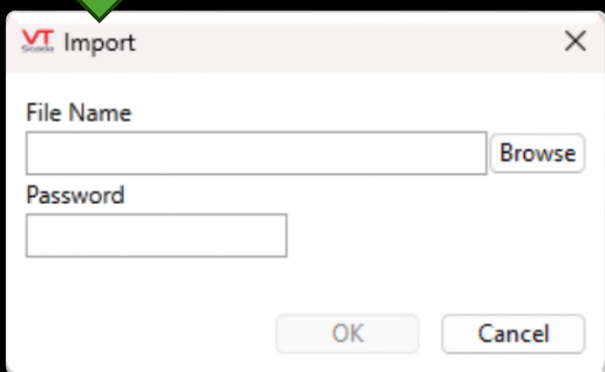
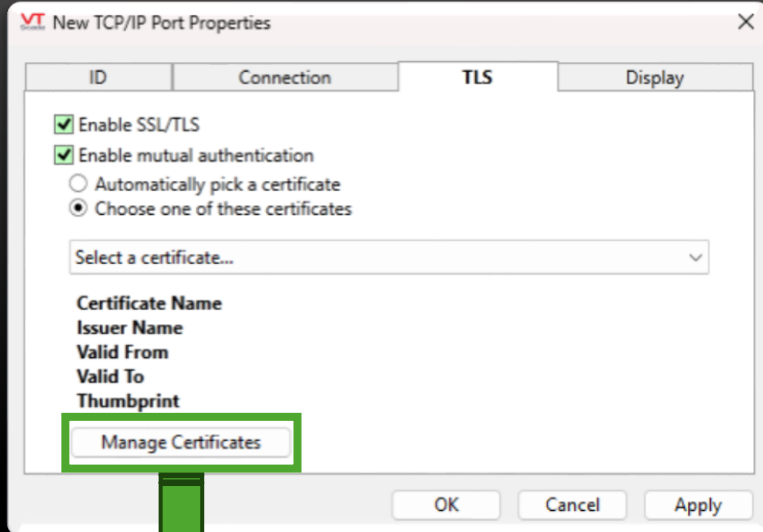
- in-VTScada interface for creating and managing certificates.
- Generate new certificates (set subject, expiry, key strength, SAN entries, etc.) in the tag properties.

## Accessed through:

- OPC UA Client tag (now uses the tool)
- TCP/IP Port tag, which also embeds this widget

## Much easier to configure...

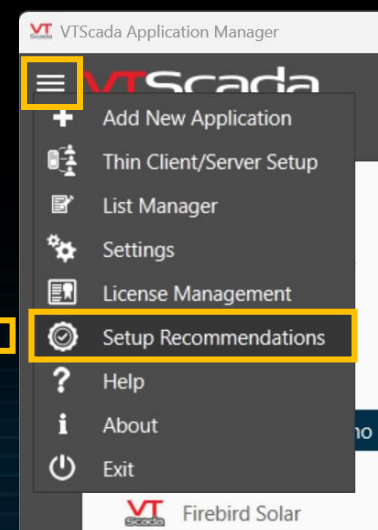
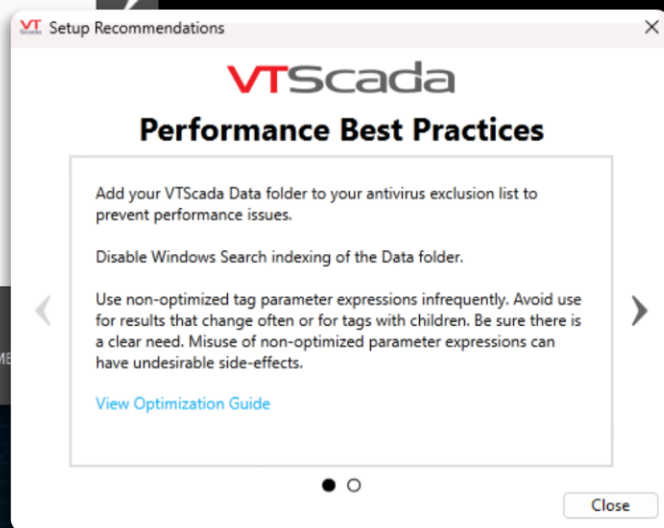
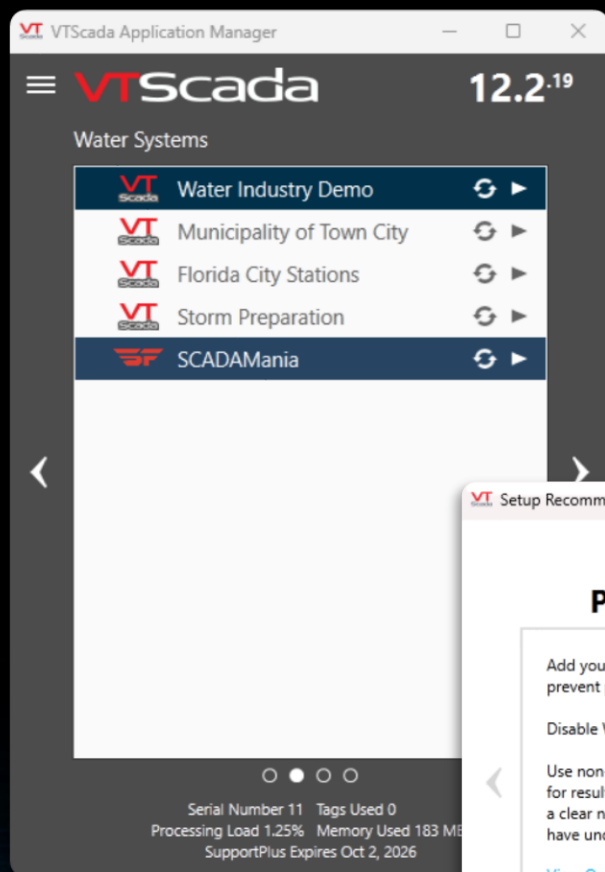
TLS settings, Trust lists, Certificate replacement, Certificate organization within VTScada





# Startup Dialog Provides Performance and Security Guidance

- View all slides to close the dialog.
- If you disable this pop-up, it will reappear on the next update.
- Setup Recommendations also accessible in the **VAM menu**.





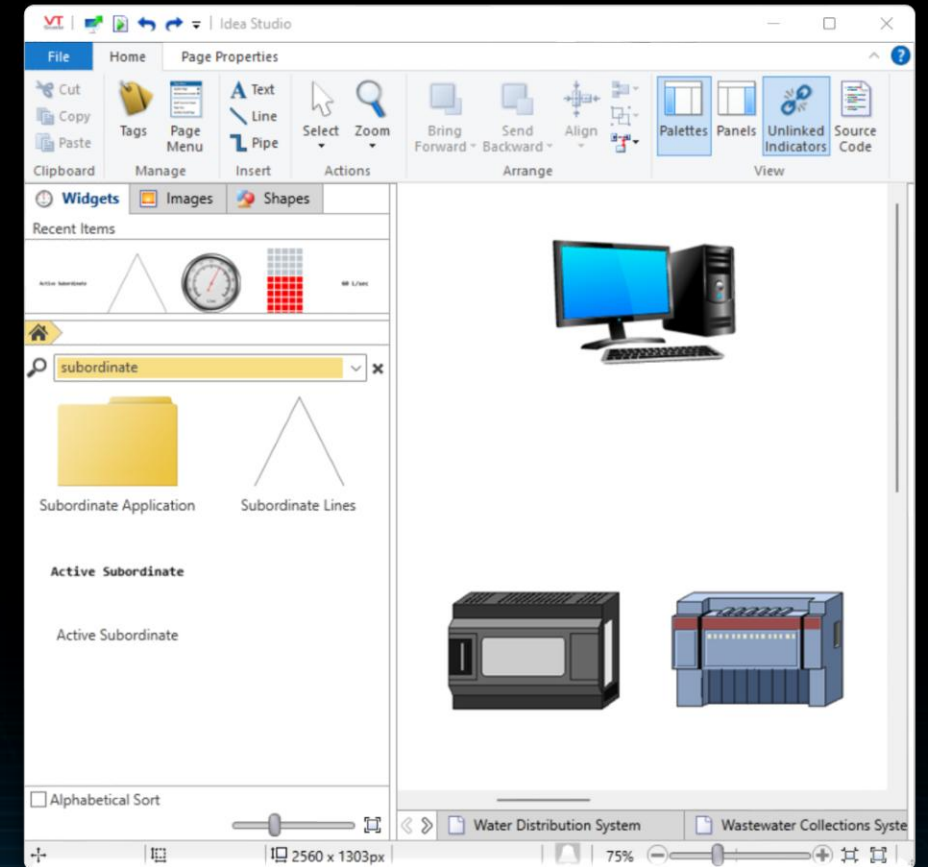
# New Driver Multiplexer Widgets

## Show Which Subordinate Driver Is Active

Two new widgets help you see which redundant driver is currently active.

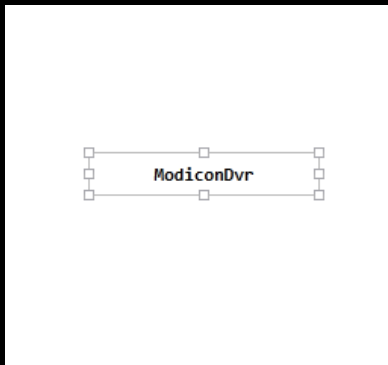
## Why this matters

- In a redundant driver setup, multiple subordinate drivers may be available.
- Previously, it wasn't always visually obvious which one VTScada had selected as the current active/parent driver.





# New Driver Multiplexer Widgets

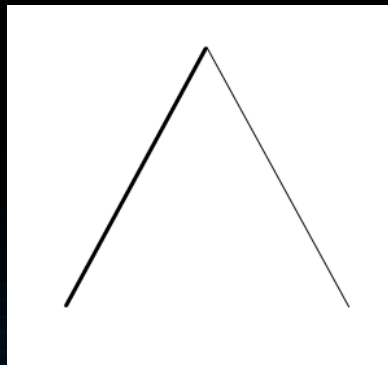


## Active Subordinate Widget

Displays the name of the active subordinate driver.

Can show: Full name - Short name – Description

Configurable from a drop-down in the widget properties.



## Subordinate Lines Widget

Shows each subordinate driver as a branch line.

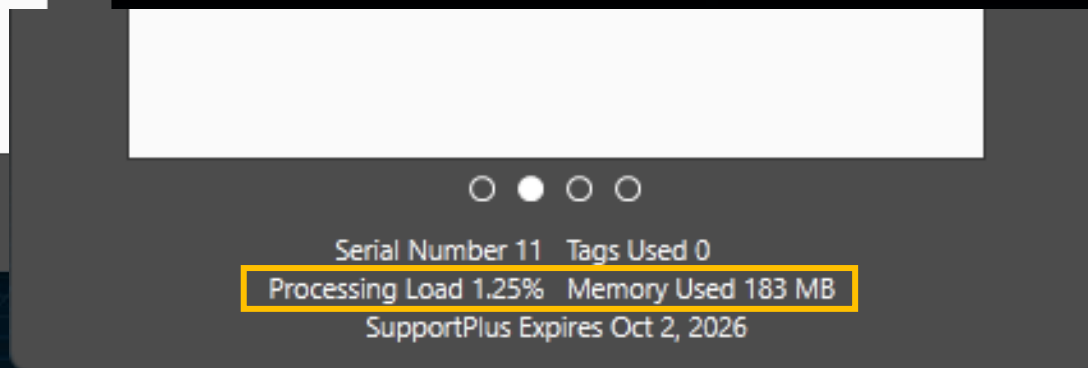
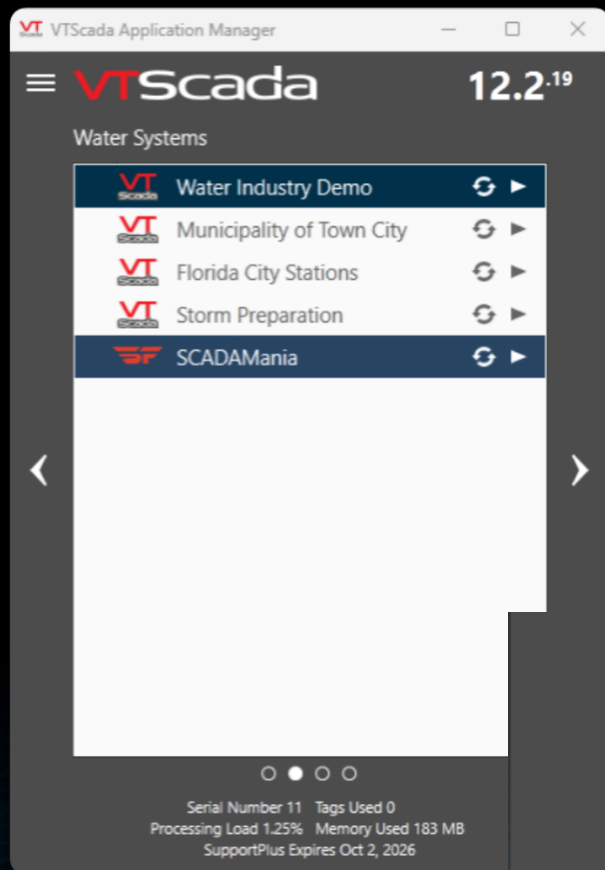
Line pointing to the active driver becomes bold.



# Live Processing Load Added to the VAM

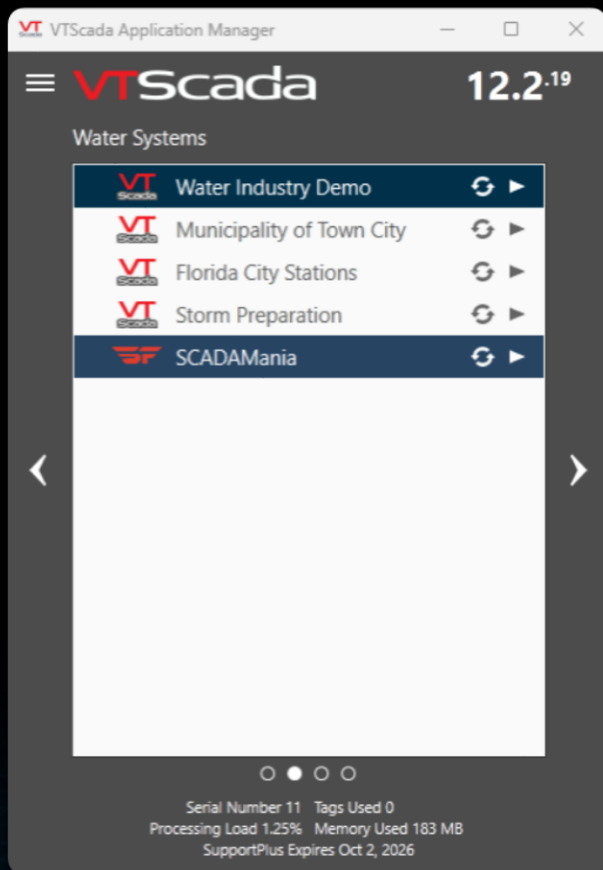
VAM now displays Processing Load giving users a clearer understanding of how busy VTScada is on a workstation.

This number shows how long VTScada must wait before it can process its own work.





# Live Processing Load Added to the VAM



Users often assumed CPU Usage reflected how hard VTScada was working.

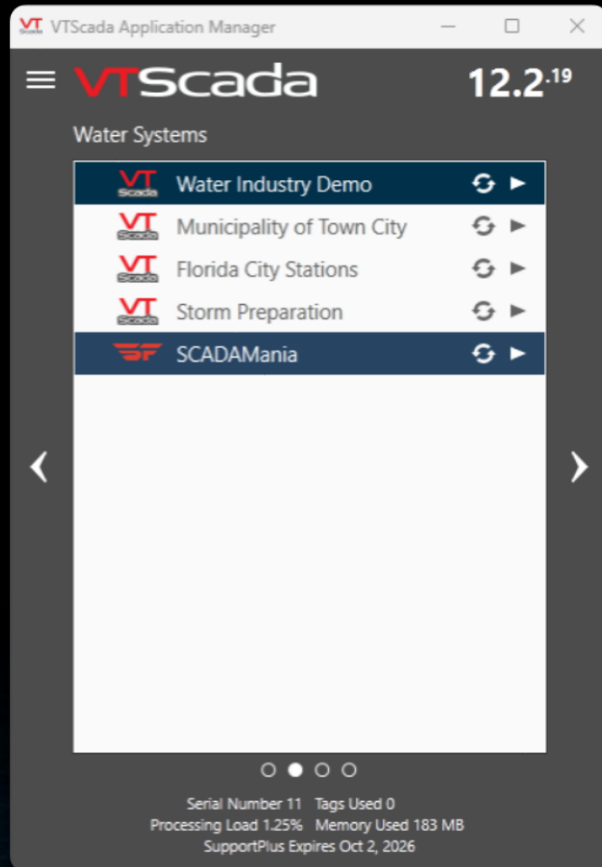
CPU percentage doesn't tell the whole story. Systems may have many cores.

Resources may be distributed unevenly or VTScada may be limited by how many threads it can process at once.

This led to misinterpretation of performance and difficulty diagnosing bottlenecks.



# Live Processing Load Added to the VAM



In addition to appearing at the bottom of the VAM, this value is also available to the Workstation Status Driver.

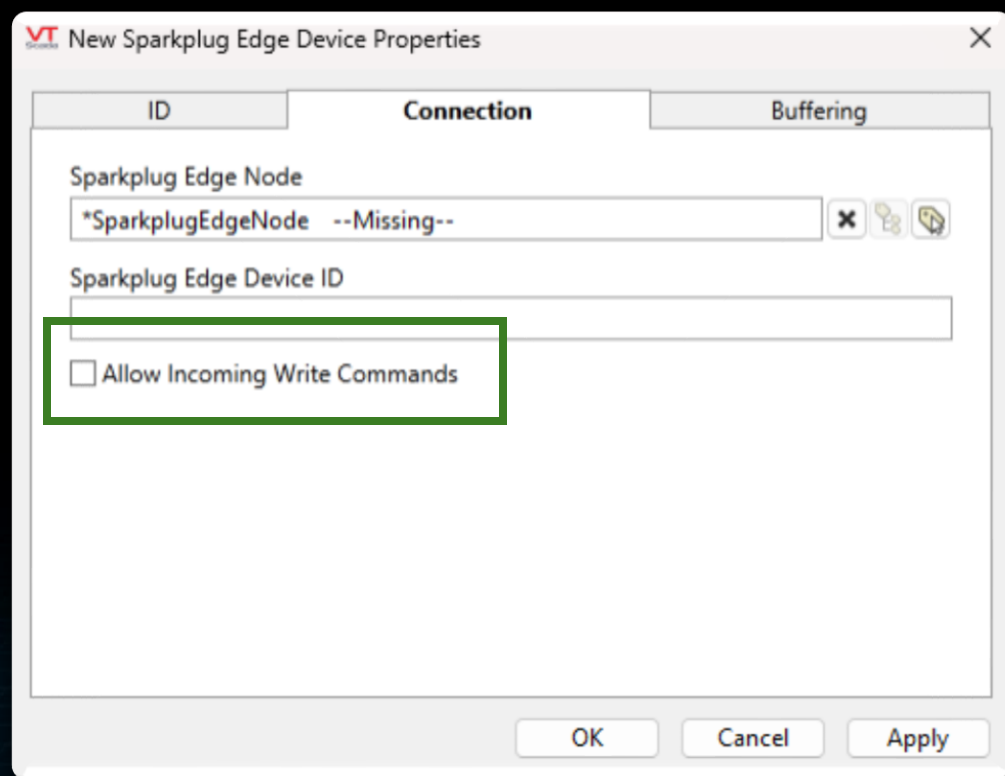
## Helps Users:

- Diagnose sluggishness
- Detect overloaded systems
- Understand if delays are caused by OS-level resource constraints or VTScada's own thread backlog



# Write Capabilities of the Sparkplug B Publisher

The Sparkplug B publisher has been enhanced to support incoming write commands from an MQTT client, if the user chooses to enable it.



Sparkplug B tags can now accept writes from MQTT clients, allowing external systems (that speak Sparkplug B) to send control values back into VTScada.

**The user must explicitly enable writing on the Sparkplug B node/device tags.**

When enabled, VTScada will accept incoming write commands and update the associated tags.



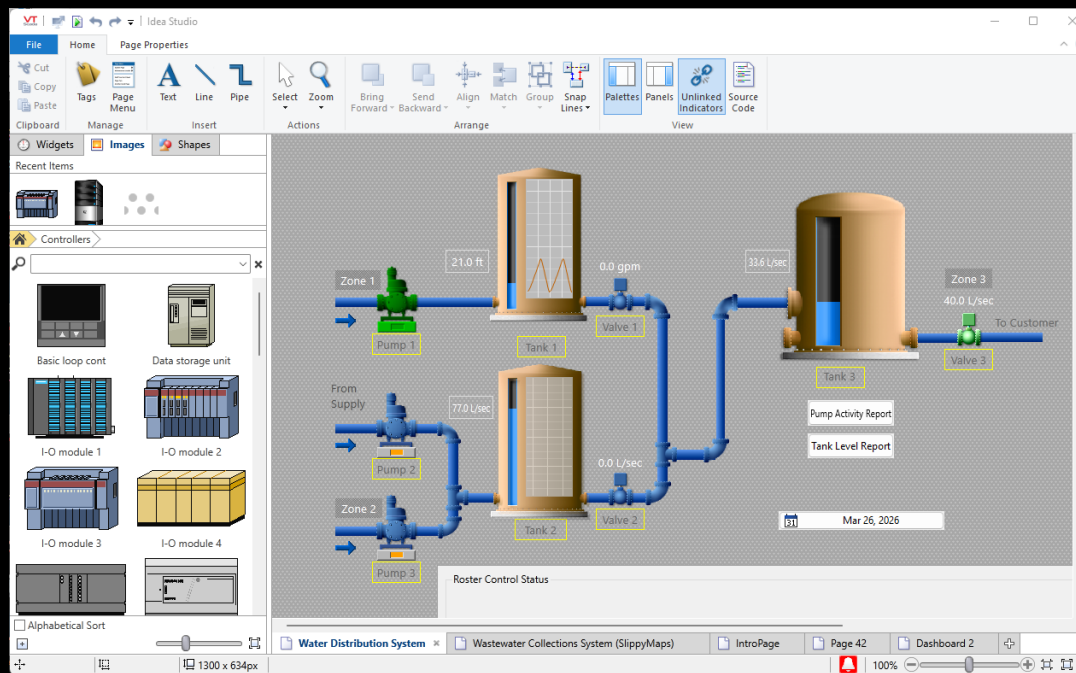
# All Select Image Dialogs Support Searching and Sorting



Now in both the Idea Studio  
AND  
the Report Studio



# Idea Studio Supports Zooming Using Ctrl + Mouse Wheel





Thank you for attending this session!

- Fill out the 2-question feedback survey via the App! *Ukova*
- Especially if you need a Continuing Education Credit or Professional Development Hours certificate.
- Don't have the app, fill out the paper form included in your conference kit and hand into Natasha.

SAVE THE DATE FOR SCADAFEST 2027!  
MARCH 8-12, 2027 | ORLANDO, FL